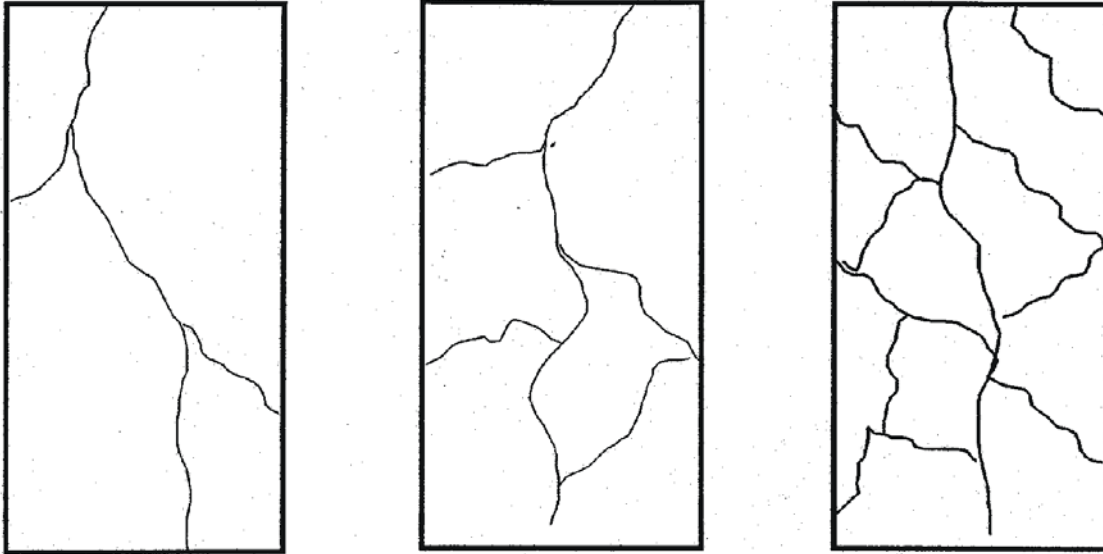


## CRAZING

The effect of crazing is not uncommon to dense strong wirecut bricks of an engineering type especially if they have a smooth face finish. It is, however, far more noticeable on Smooth Blue types of bricks.



The crazing is as a result of the stresses set up, on the surface of the bricks, when the material cools after the semi-vitrification that takes place during the high temperature firing.

Crazing or the effect of fire crazing is often referred to as fire-cracking or webbing and can be of a simple hairline crack or as a fine web-like pattern.

The crazing is undetectable to the eye whilst the bricks remain dry prior to use or whilst wet.



It is purely superficial and will not detract from the overall performance. The fine hairline cracks, although unnoticeable during selection, are certainly a part of the character of the bricks. The changing weather conditions simply aggravate the crazing to a degree when they become most apparent, especially after saturation when the moisture may remain in the cracks for far longer periods of time.

For further information and advice regarding this topic please contact Ibstock's Design & Technical Helpline on 0844 800 4576 or email [technical@ibstock.co.uk](mailto:technical@ibstock.co.uk)